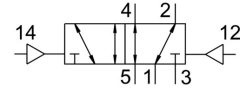
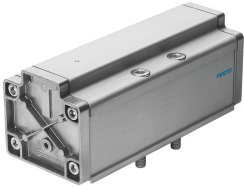


# Pneumatic valve

## J-5/2-3/4-D-4

Part number: 12462

FESTO



## Data sheet

| Feature                                  | Value  |
|--|--|
| Type code                                | J  |
| Valve function                           | 5/2, bistable  |
| Actuation type                           | Pneumatic  |
| Width                                    | 76 mm  |
| Standard nominal flow rate               | 6000 l/min   |
| Pneumatic working port                   | Sub-base, size 4 as per ISO 5599-1<br>G3/4                         |
| Operating pressure                       | -0.9 bar ... 16 bar  |
| Structural design                        | Piston gate valve  |
| Nominal width                            | 18 mm  |
| Width dimension                          | 82 mm  |
| Exhaust air function                     | With flow control option   |
| Sealing principle                        | Soft   |
| Mounting position                        | Any  |
| Conforms to standard                     | ISO 5599-1   |
| Manual override                          | None   |
| ISO code                                 | 401  |
| Type of control                          | Direct   |
| Flow direction                           | Reversible   |
| Symbol                                   | 00991037   |
| Lap                                      | Overlap  |
| Pilot pressure                           | 2 bar ... 16 bar   |
| Changeover time                          | 20 ms  |
| Operating medium                         | Compressed air as per ISO 8573-1:2010 [7:4:4]                      |
| Information on operating and pilot media | Operation with oil lubrication possible (required for further use) |
| Temperature of medium                    | -10 °C ... 60 °C   |
| Noise level                              | 85 dB(A)   |
| Pilot medium                             | Compressed air as per ISO 8573-1:2010 [7:4:4]                      |
| Ambient temperature                      | -10 °C ... 60 °C   |
| Product weight                           | 1800 g   |
| Type of mounting                         | On sub-base<br>With through-hole and screw                         |
| Pilot air port 12                        | Sub-base, size 4 as per ISO 5599-1                                 |
| Pilot air port 14                        | Sub-base, size 4 as per ISO 5599-1                                 |
| Pneumatic connection 1                   | Sub-base, size 4 as per ISO 5599-1                                 |
| Pneumatic connection 2                   | Sub-base, size 4 as per ISO 5599-1                                 |

| <b>Feature</b>         | <b>Value</b>                       |
|------------------------|------------------------------------|
| Pneumatic connection 3 | Sub-base, size 4 as per ISO 5599-1 |
| Pneumatic connection 4 | Sub-base, size 4 as per ISO 5599-1 |
| Pneumatic connection 5 | Sub-base, size 4 as per ISO 5599-1 |
| Note on materials      | RoHS-compliant                     |
| Seals material         | NBR                                |
| Housing material       | Aluminum                           |